

Eutek SlurryCup™

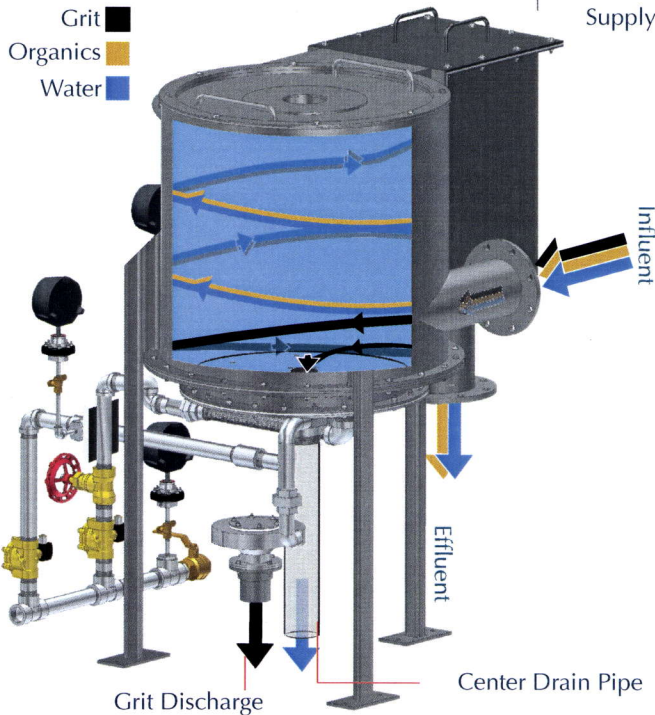
High performance grit washing and sludge degritting.

APPLICATIONS

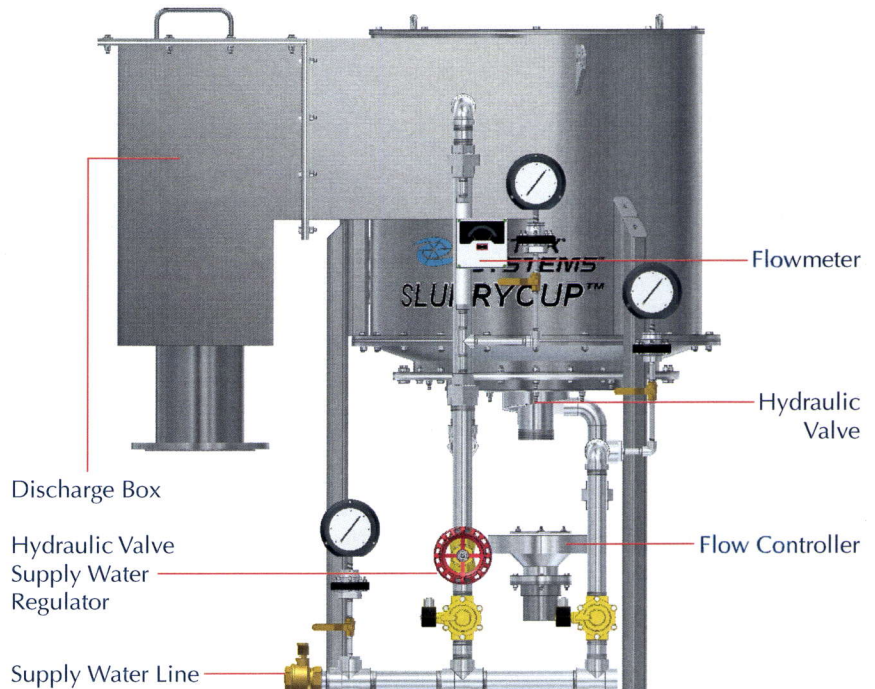
- Grit washing at WWTP headworks
- Primary and secondary sludge degritting
- Continuous flow processing
- Pumped flow operation

ADVANTAGES

- Increasing performance as flows increase
- Boundary layer grit washing can retain grit as small as 75 micron
- No moving parts and no power needs
- Durable 304 or 316 stainless steel construction



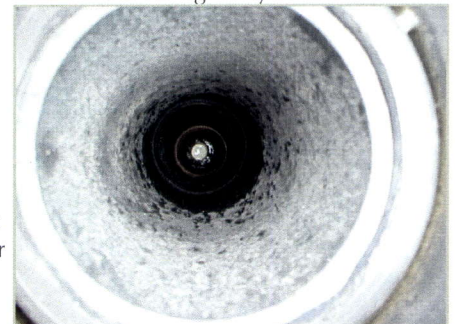
The **SlurryCup** system is a highly efficient process used to capture, classify, and remove fine grit, sugar sand, and high density fixed solids from grit slurries, and both primary and secondary sludge.



HOW IT WORKS

Flow enters the stainless steel vessel tangentially at a controlled rate and velocity. The flow regime established in the device forms an open free vortex which results in high centrifugal forces and a thin predictable boundary layer. Grit is forced to the outside perimeter or held in suspension until it falls by gravity into the boundary layer which sweeps the grit, but not organics, into the collection chamber at the bottom of the unit.

The concentrated slurry exits the vessel through a hydraulic valve where a secondary wash occurs prior to discharge. Two levels of washing produces clean grit ready for dewatering. The water containing the organics exits from the overflow through the discharge box and returns to the plant for further treatment.



Overhead View of SlurryCup Vortex

SlurryCup Design Criteria

Grit Washing

Unit Diameter	Min Flow / Headloss		Max Flow / Headloss		Pipe Diameter	
	Q	H	Q	H	Inlet	Outlet
24	150	5.0	295	14.4	4	6
32	210	4.7	450	14.4	6	8
42	260	3.7	630	14.0	6	8
56	630	6.4	1,100	11.5	8	10

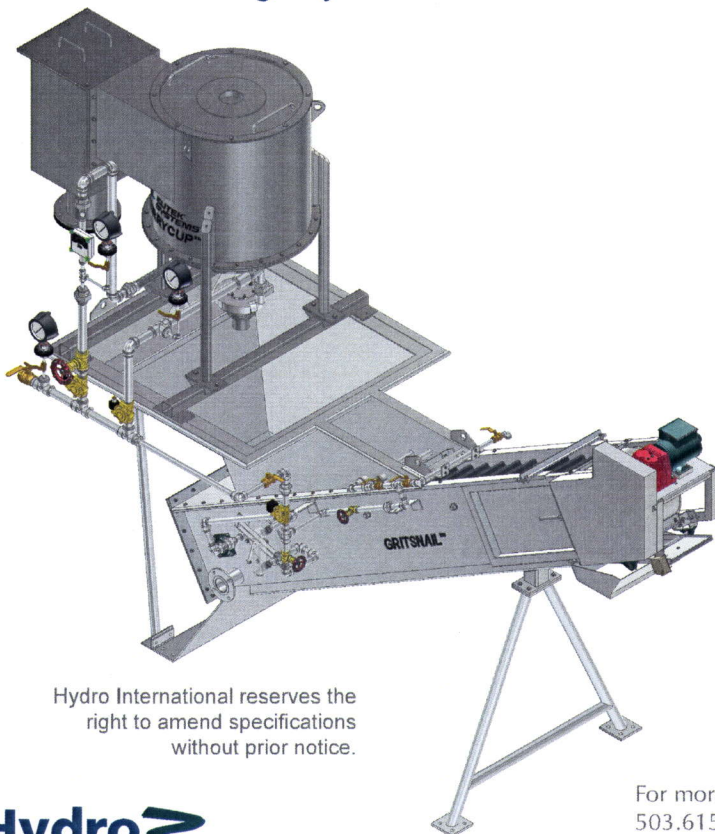
(Diameter - Inches, Q - gpm, H - psig)

Sludge Degritting

Unit Diameter	Min Flow / Headloss		Max Flow / Headloss		Pipe Diameter	
	Q	H	Q	H	Inlet	Outlet
24	150	5.2	290	14.5	4	6
32	210	4.7	450	14.4	6	8
42	290	4.3	650	14.0	6	8
56	650	6.8	1,100	11.5	8	10

(Diameter - Inches, Q - gpm, H - psig)

SlurryCup / Grit Snail™ Washing & Dewatering System



Hydro International reserves the right to amend specifications without prior notice.



SlurryCup Capacity

- Handles flow of 150 to 1,000 GPM in a single unit
- Sizes from 24" to 56" diameter
- Solids concentrations up to 1.5%

SlurryCup Design Notes

- Removes over 95% of abrasives, reducing down stream deposits and mechanical wear
- Increasing performance as flows increase
- All hydraulic design with no internal moving parts is simple to operate and ensures long component life
- Large diameter easily handles peak flow grit volumes
- Final grit slurry typically contains 60% total solids with less than 20% organic solids
- Hydraulic valve provides secondary grit washing

For more information please call our office at 503.615.8130 or inquire at www.hydro-international.biz.



Certificate No. 961366